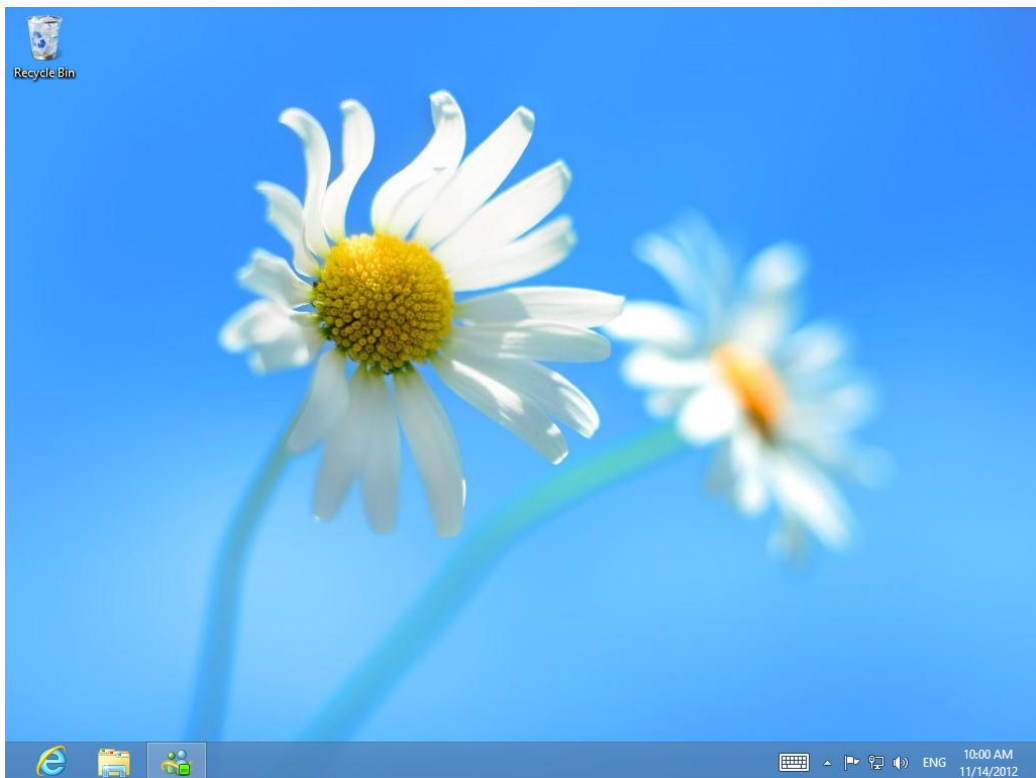


## A. Software Installation

1. From the Metro Start Screen, click “Desktop”



2. From the **Desktop**, install the software from CD or from your dive computer support website



## B. USB Driver Installation

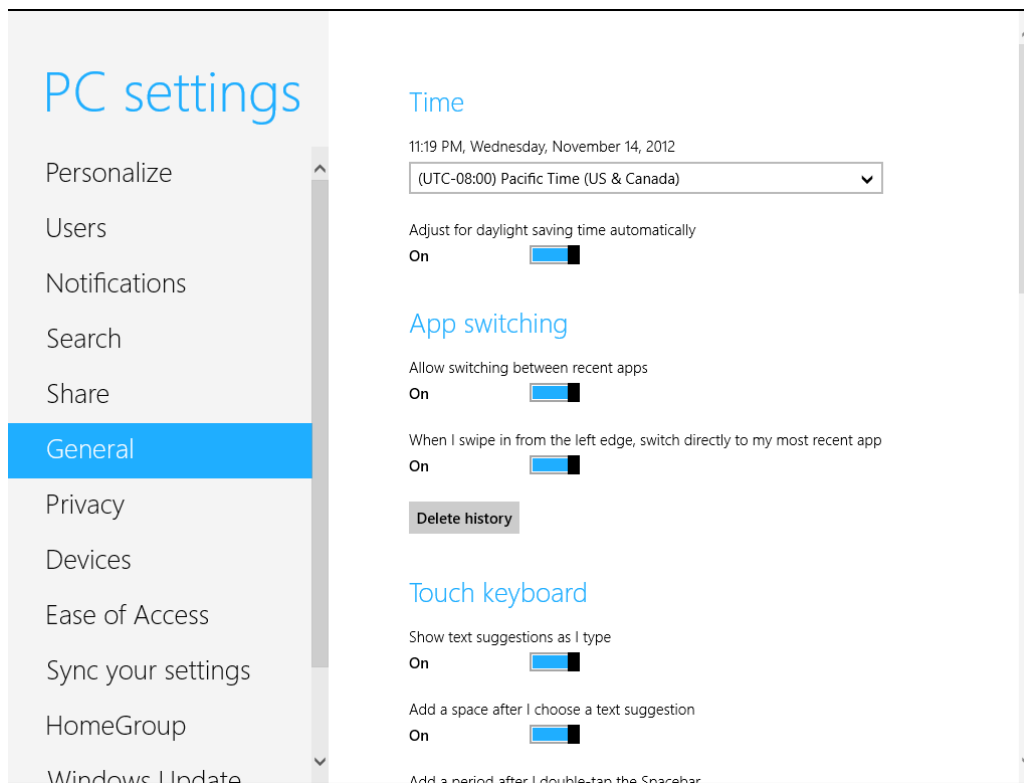
1. From the Metro Start Screen, open **Settings** (move your mouse to the bottom-right-corner of the screen and wait for the pop-out bar to appear, then click the Gear icon).



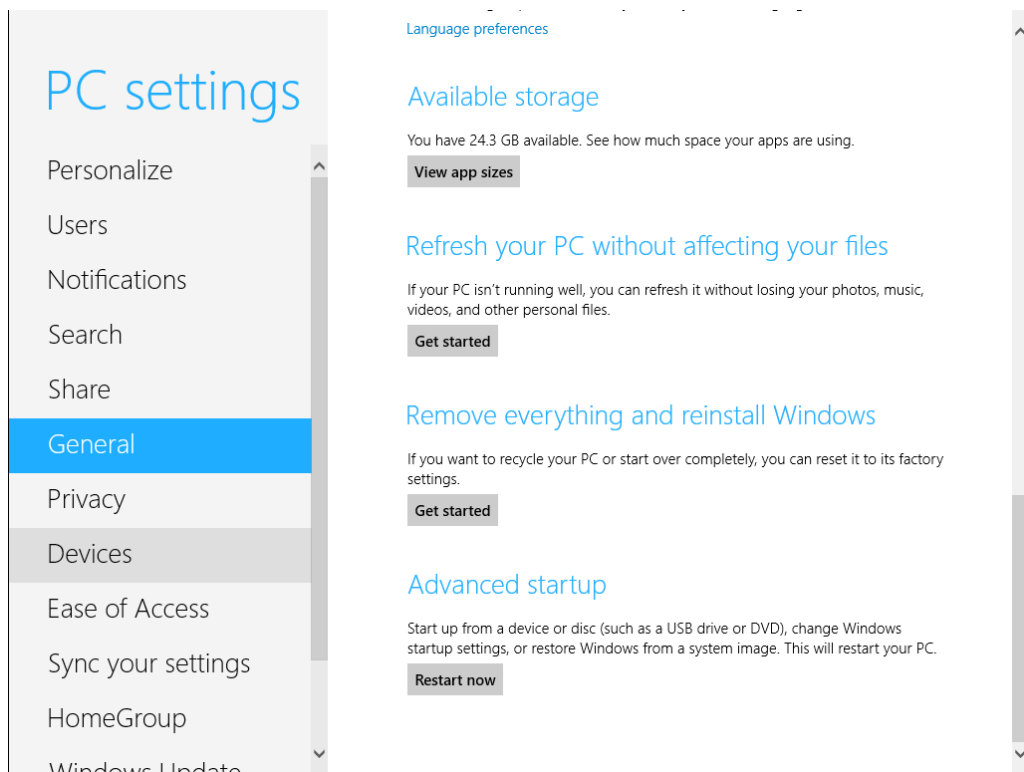
2. Click "**Change PC Settings**".



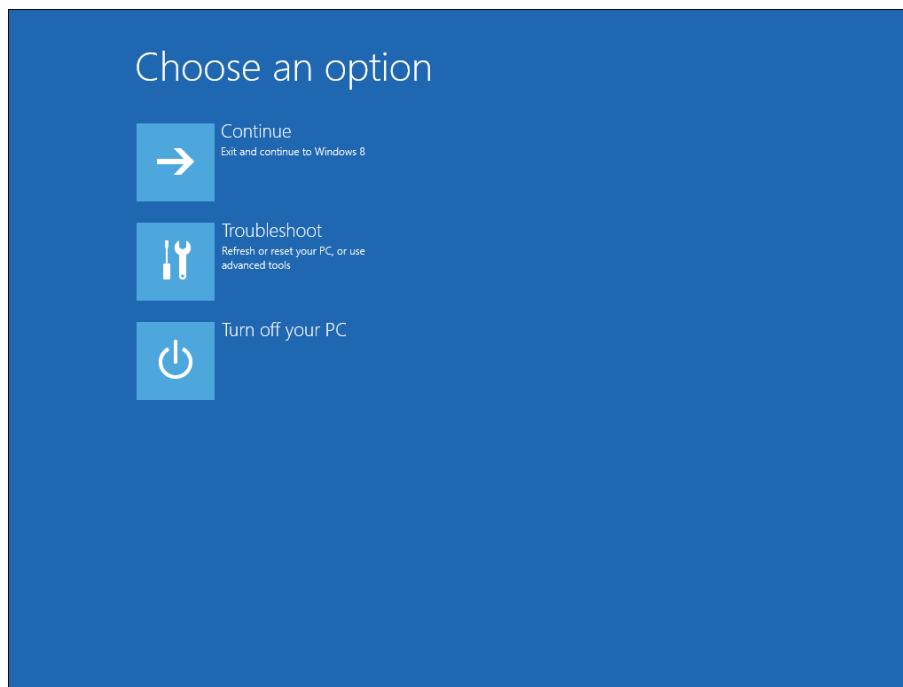
3. From **PC Settings**, click **“General”**.



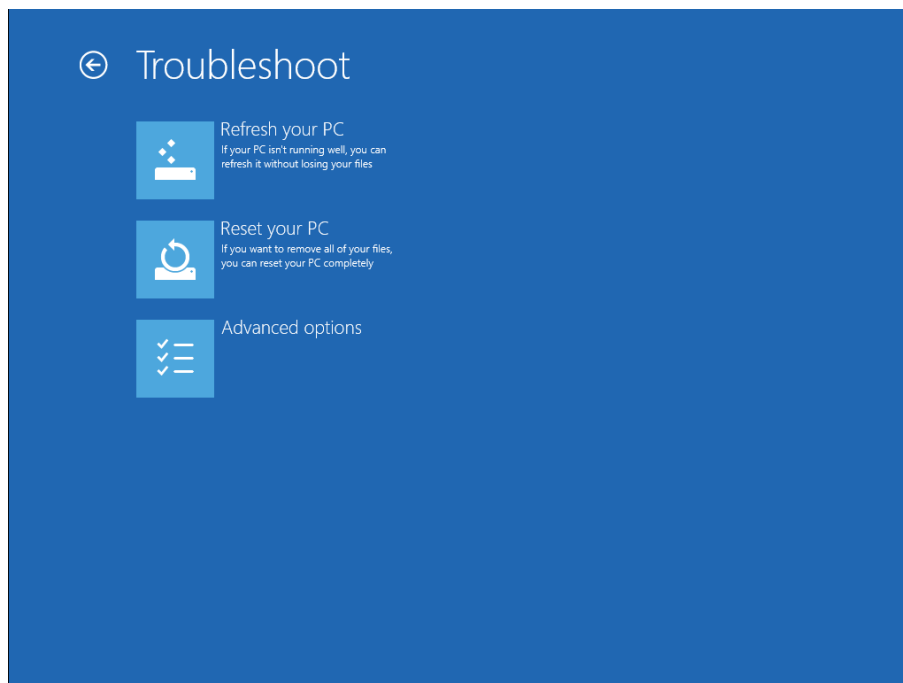
4. Scroll down, and click **“Restart now”** under **“Advanced startup”**.



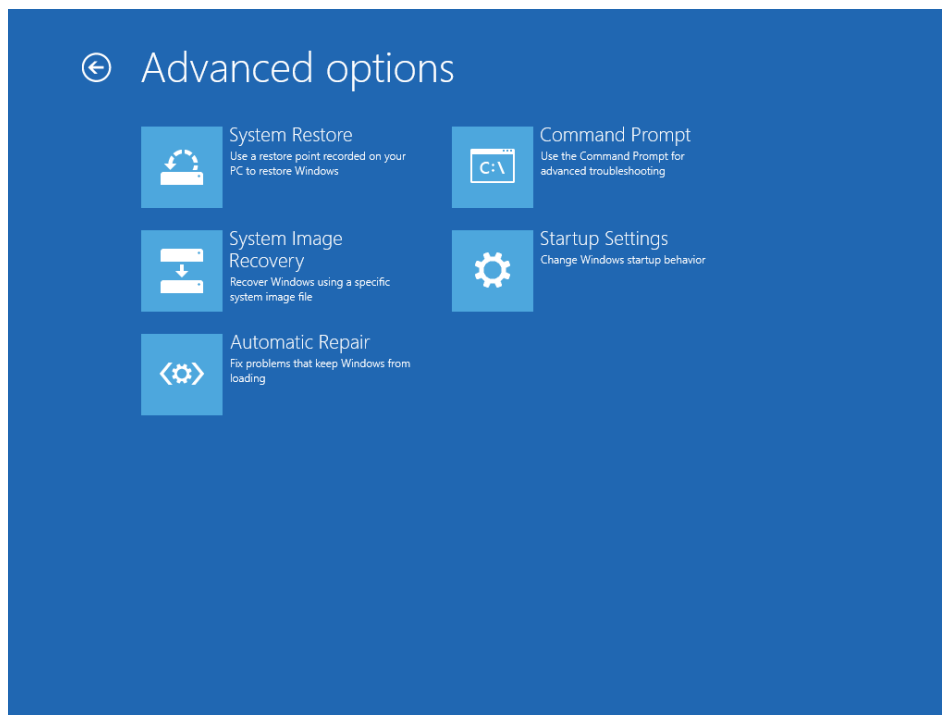
5. Wait a bit.
6. From **“Choose an option”**, click **“Troubleshoot”**.



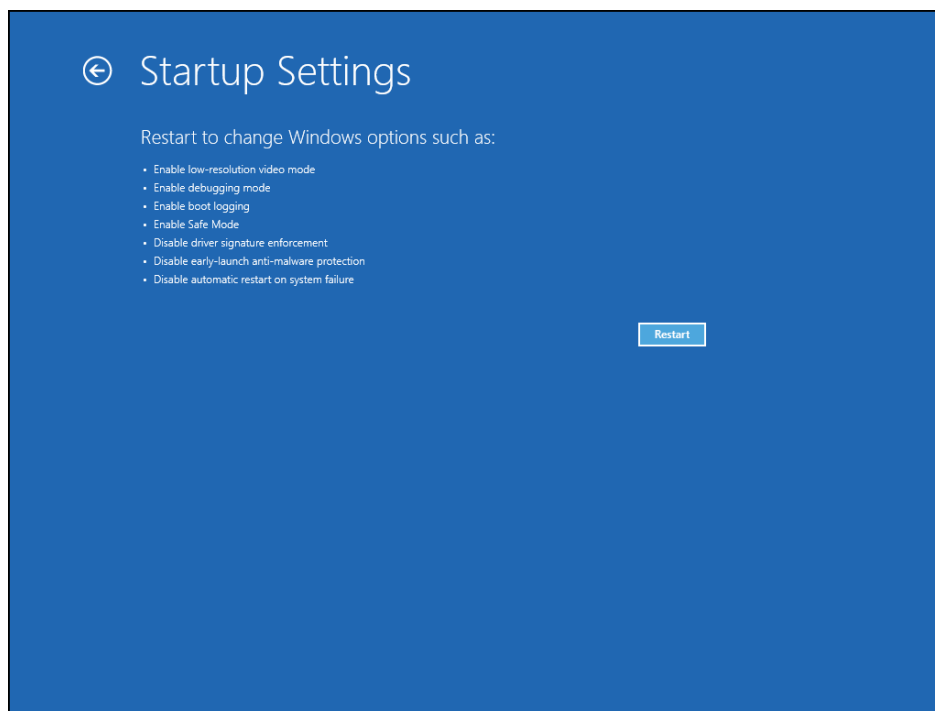
7. From “**Troubleshoot**”, click “**Advanced Options**”



8. From “**Advanced options**”, Click “**Startup Settings**”



9. From “Startup Settings”, click **Restart**



10. When your computer restarts, from “Startup Settings”, select “**Disable driver signature enforcement**” (press 7) from the list. You can now install the USB driver after Windows restarts.

## Startup Settings

Press a number to choose from the options below:

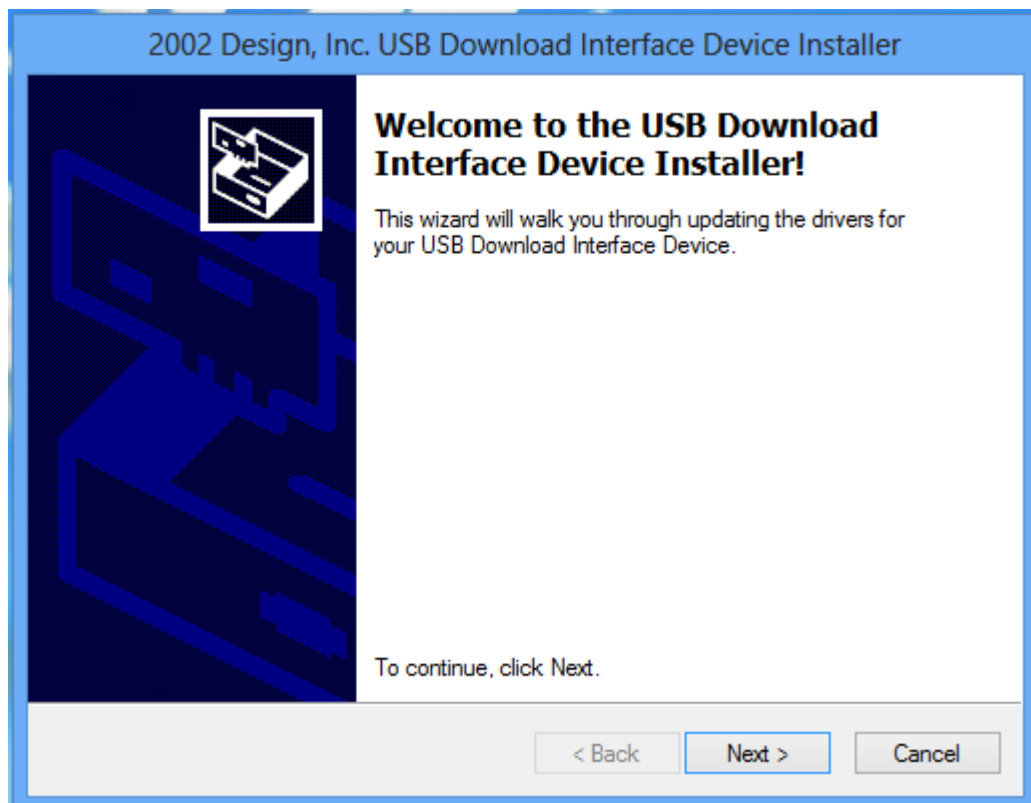
Use number keys or functions keys F1-F9.

- 1) Enable debugging
- 2) Enable boot logging
- 3) Enable low-resolution video
- 4) Enable Safe Mode
- 5) Enable Safe Mode with Networking
- 6) Enable Safe Mode with Command Prompt
- 7) Disable driver signature enforcement
- 8) Disable early launch anti-malware protection
- 9) Disable automatic restart after failure

Press F10 for more options

Press Enter to return to your operating system

11. Download the latest **Vista\_7\_USBDriver.exe** (for Windows 8 32bits) or **x64\_USBDriver.exe** (for Windows 8 64bits) from your dive computer support website
12. Execute the **Vista\_7\_USBDriver.exe** or **x64\_USBDriver.exe** to start the USB driver installation
13. From the “**Welcome to the USB Download Interface Device Driver**” dialogue box, click “**Next**”



14. During the installation, Windows 8 will display twice a warning message “**Windows can’t verify the publisher of this driver software**”. Select “**Install this driver software anyway**”.

